



FABEREXPOSIZE

VISUALEXPERIENCE

Faber Tension Fabric Frames



Tension Fabric frames

At FaberExposize, we have many years of experience with all possible sorts of displays for retail, exhibitions, events and any other in or outdoor applications. Tension Fabric frames are of course no exception to this.

We offer a complete range of possibilities, both with and without lighting.

At FaberExposize we understand that every environment is different and that a display should enhance the surroundings it is placed in. Especially when lighting is required, we know what combination of frame, fabric and light strength fits best.

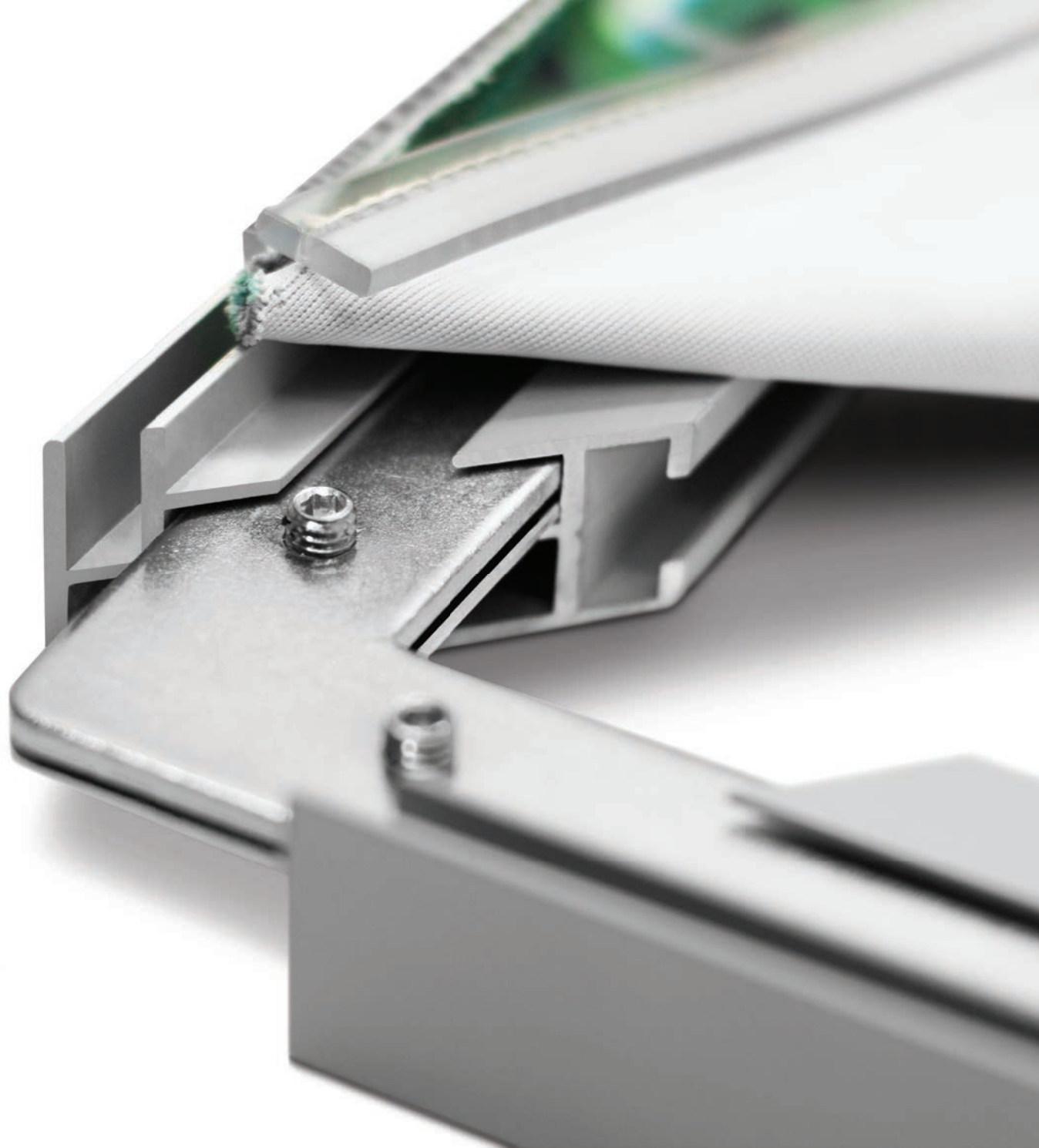
The products shown in this brochure are only part of our complete range. If you can't find what you are looking for, please contact us and we will gladly help you find the best solution.

FABRIC WITH SILICONE STRIP

- 4 SIMPLE 19
- 8 HEAVY 27
- 12 CABINET 30
- 14 DOUBLE 44
- 18 LIGHTBOX 50 & 60
- 22 LIGHTBOX 90
- 26 LIGHTBOX 120
- 30 LIGHTBOX DOUBLE 100
- 34 LIGHTBOX DOUBLE 200
- 38 CURVED FRAMES

- 42 STABILISERS
- 44 LED TECHNIQUES
- 46 FREESTANDING & SUSPENDED
- 49 ACOUSTIC SOLUTIONS

- 50 POP-UP LED-BOX
- 52 FLEXTILE 80, 100, 120





SIMPLE 19

This single-sided profile is a very popular and versatile aluminium frame. Available in any colour. Widely used in retail- and office interiors or integrated into exhibition stands.

PROFILE

This basic profile is typically used in home decoration and the interior of retail spaces and offices. This single-sided frame is also available with punch holes.

BENEFITS

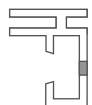
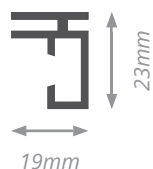
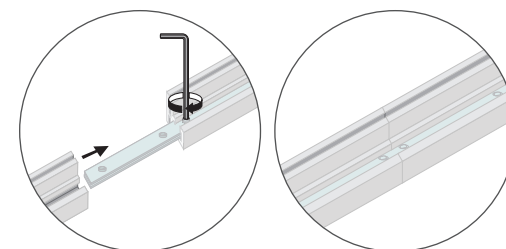
Wall mount every 30 cm

Extensionset above 4 metres

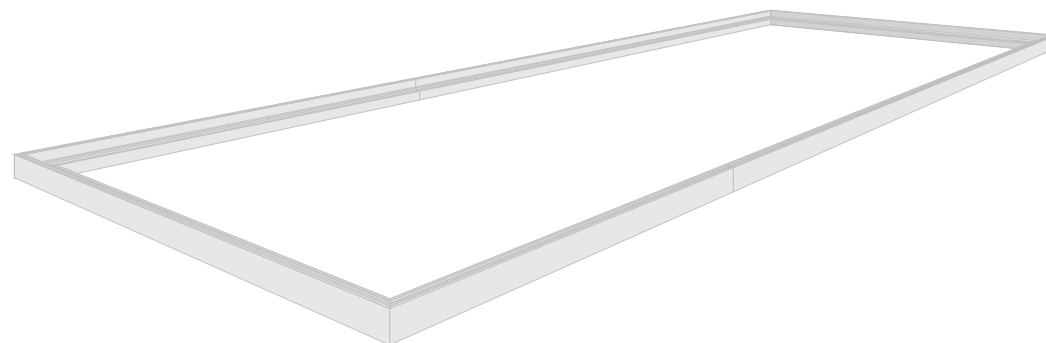
Option: frame with punch holes

Available in different colours

LARGE FRAMES Large size textile frames can be shipped in smaller parts. After shipping or after ordering extra lengths, easily connect the profiles together with the extension hardware to make one frame of the Simple 19. This hardware enables you to create large frames of unlimited size!



← **OPTION: PUNCH HOLES** This textile frame can be mounted to the wall every 30 cm by drilling the profile directly to the wall. To make installation easier for your customers, the Simple 19 is also available with punch holes. This provides a more convenient way to mount the frame to the wall saving time and labour during installation.





APPLICATION The Simple 19 can be mounted to the wall by either drilling directly into the profile, or using the wall mount hardware. Place the recommended wall mounts under the frame to hang the frame on the wall. Or use the Simple 19 with punch holes to save time and labour during installation.

ACCESSORIES



Lockset Simple



Wallmount Simple



Extensionset Eco/Simple



Therm Acoustic









HEAVY 27

This single-sided, strong profile can be mounted to the wall or suspended from the ceiling and is available in any colour. Widely used in home decoration or retail and office interiors.

PROFILE

This strong profile is typically used in home decoration and the interior of retail spaces and offices. This single-sided frame can be mounted to the wall or ceiling.

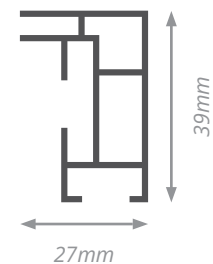
BENEFITS

Strong textile frame

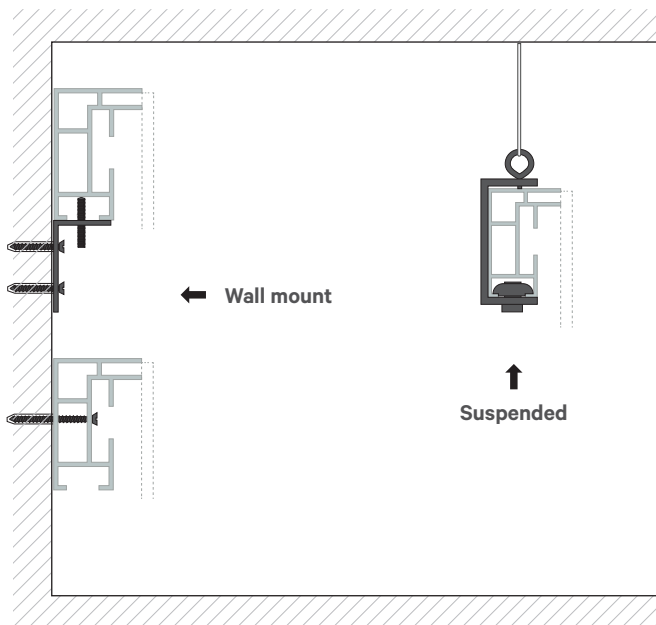
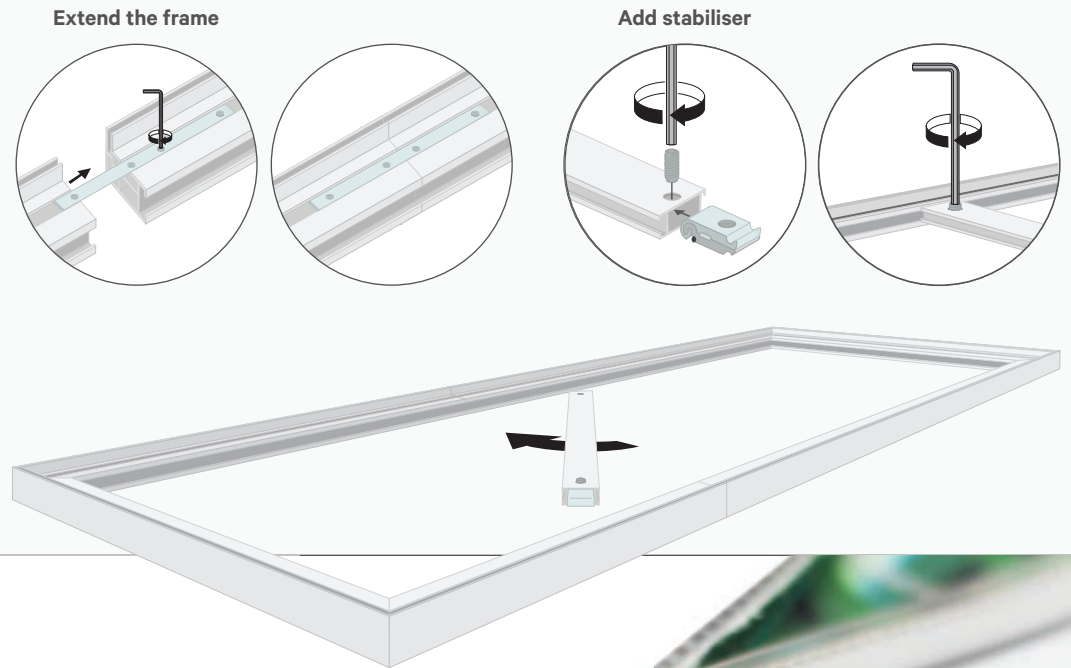
Three options of mounting the frame

Use stabilisers above 2 metres

Available in different colours



LARGE FRAMES Large size textile frames can be shipped in smaller parts. After shipping or after ordering extra lengths, easily connect the profiles together with the extension hardware to make one frame of the Heavy 27. This hardware enables you to create large frames of unlimited size! To ensure stability of large size frames, stabilisers can be added to the frame.



APPLICATION Thanks to its heavier structure, the Heavy 27 can be fixed to the wall with fewer mounting points than smaller profiles. It can be attached by drilling holes through the frame, or by using the recommended wall mount hardware. This profile can also be suspended from the ceiling using the recommended ceiling mount.





ACCESSORIES



Lockset Heavy



Lockset Heavy Short



Extensionset Heavy



Flexible Lockset



Wallmount Simple



Wallmount Heavy



Ceiling Mount Heavy



Locks Stabilizer



Stabilizer 43



Therm Acoustic





CABINET 30

This single-sided textile frame is intended to be built into a niche, frame or cabinet to create custom made display solutions.

PROFILE

This aluminium frame is used to finish off a niche, frame or cabinet. An ideal built-in solution.

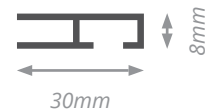
BENEFITS

Low-cost textile frame

Perfect to finish off a niche or cabinet

Built-in solution

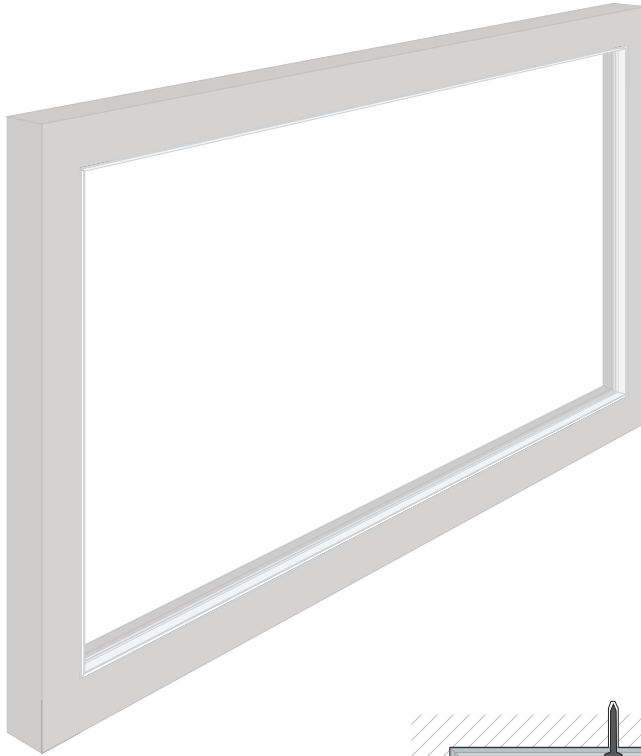
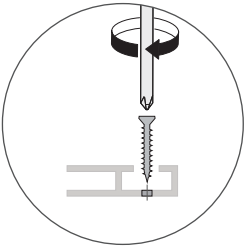
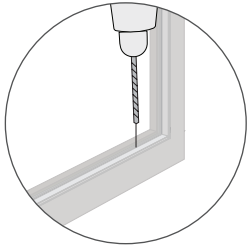
Available in different colours



Drilling the
aluminium profile

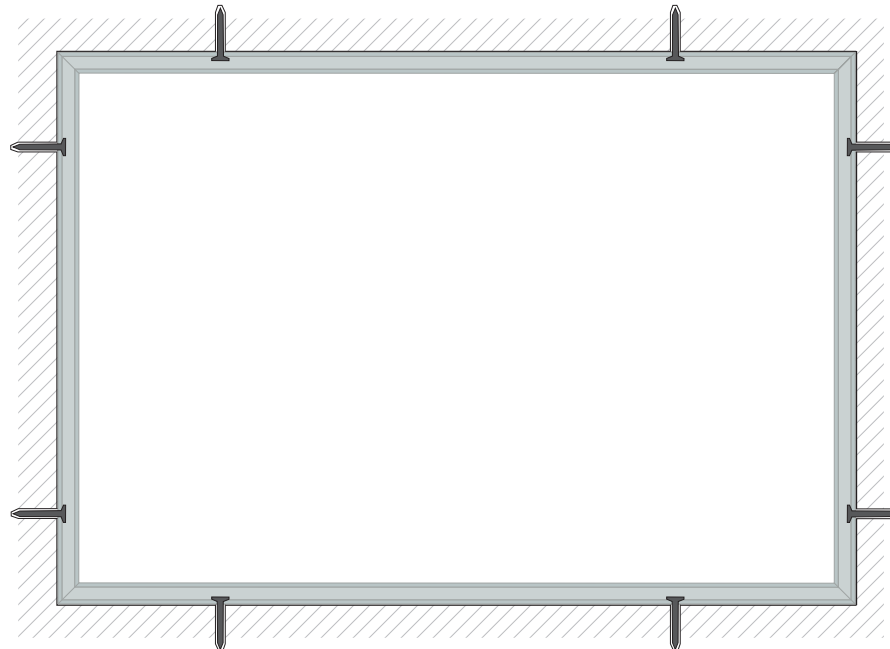
STABILIZATION To ensure stability of the frame, no stabilisers are required. The frame is attached to any custom fixture, which makes the frame stable.

Drilling the profile



BUILT-IN SOLUTION For installing the Cabinet 30 simply drill through the profile into the niche, frame or cabinet. Use multiple fixation points to make sure the cabinet is installed perfectly. Thanks to its simplicity, it is an ideal solution for a low cost textile frame.

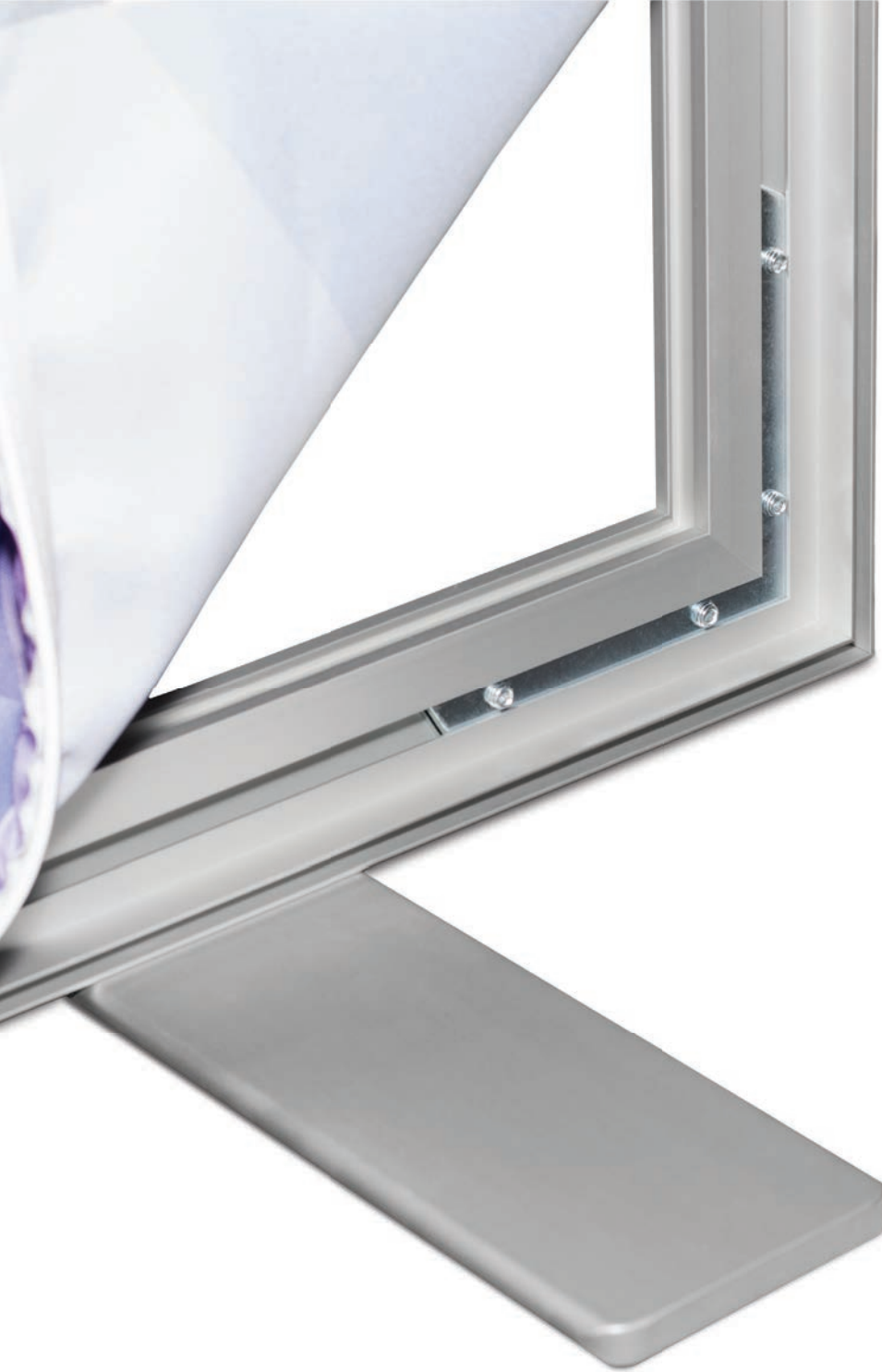
APPLICATION The Cabinet 30 is a built-in profile mounted into a niche, frame or cabinet interior with multiple fixation points.



ACCESSORIES



Lockset Hanging Profile



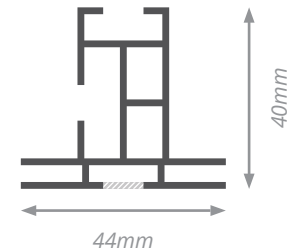
DOUBLE 44

This double-sided profile is a very popular and super versatile aluminium frame. Available in any colour. It is widely used for signage in retail or can be used creatively in the office or showroom for space management solutions, decoration and privacy.



PROFILE

This solid profile is perfect to use in retail, office or showroom. Thanks to its outer channel, various accessories can be applied. The Double 44 is also available with smooth finish, the Double 44 Closed.



BENEFITS

Suitable for large sizes

Combine open and closed together

Available in different colours

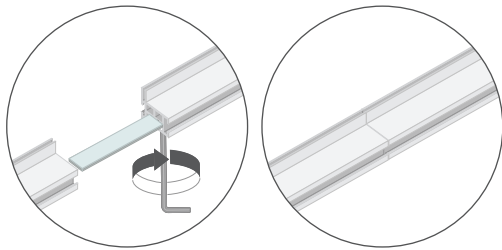


SUSPENDED OPTION When used suspended, this double-sided frame is most often used to create unique banners at exhibitions, in retail signage or in showrooms.

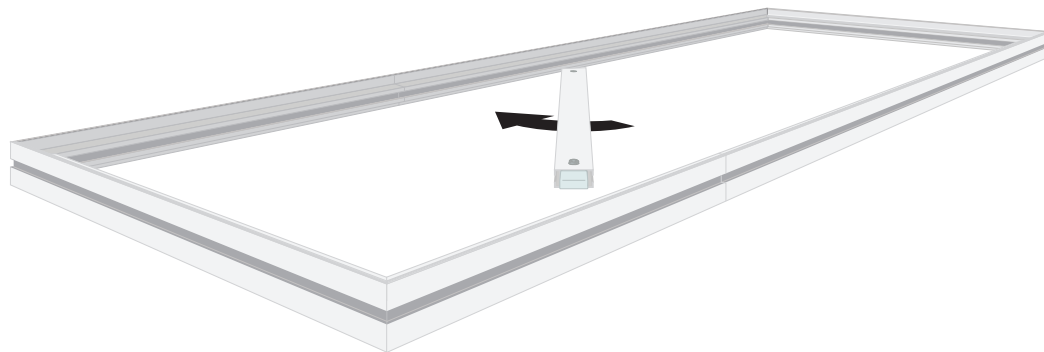
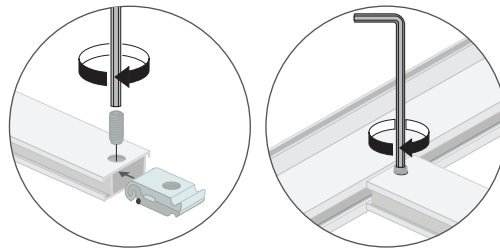


LARGE FRAMES Large size textile frames can be shipped in smaller parts. After shipping or after ordering extra lengths, easily connect the profiles together with the extension hardware to make one frame of the Double 44. This hardware enables you to create large frames of unlimited size! To ensure stability of large size frames, stabilisers can be added to the frame.

Extend the frame



Add stabiliser







**FABRIC
WITH
SILICONE
STRIP**



LIGHTBOX 50 & 60

These single-sided aluminium profiles have minimal depth of only 50 & 60 mm creating an elegant, modern look. These frames illuminate the textile print from behind using LED strips on a dibond back. Unique is the choice of two light intensities and the ability to dim the light. These lightboxes are most often used in retail store displays.



PROFILE

These Lightbox frames illuminate the textile print from behind using LED strips on a dibond back. With a depth of only 50 and 60 mm, these lightboxes are often used in retail store displays.

BENEFITS

High quality light distribution

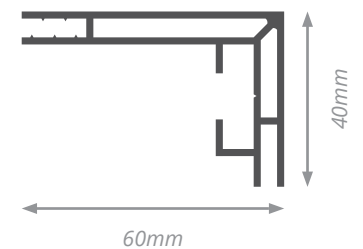
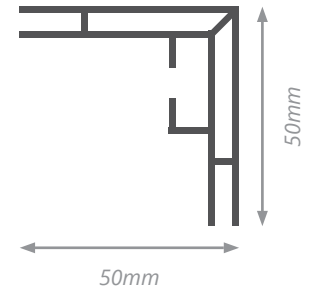
LED-technique: LED on dibond

Choose between two light intensities

Dimmable possible

3 years warranty

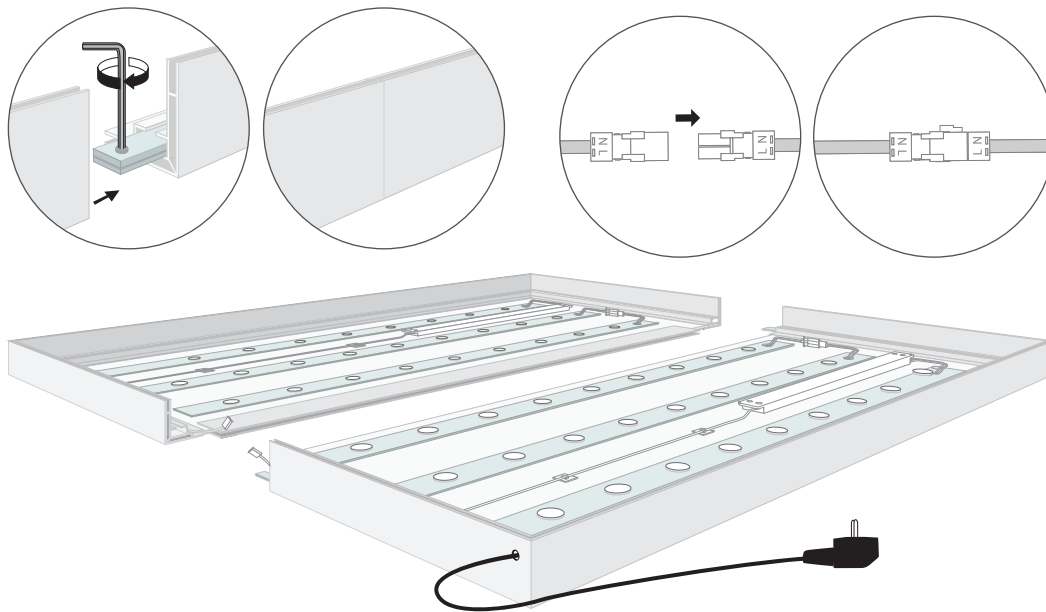
Available in different colours



LARGE FRAMES These large size lightboxes are shipped in separate sections to minimise freight cost. After shipping, easily connect the profiles at destination with simple tools to make one frame of the Lightbox 50 or Lightbox 60.

Extend the frame

Reconnect the cables



LED ON DIBOND These lightboxes illuminates the textile print from behind using LED strips on a dibond back. The lighting design is well-balanced to create an even illumination across the entire surface.

Unique feature of the lightboxes with LED on dibond, is the ability to choose between two light intensities. The LED with 7.250 lumen per m² gives a bright, even light distribution. The LED modules with 11.000 lumen per m² makes a real eye-catcher of the visual and is most often used in retail window displays or exhibitions.

TWO LIGHT INTENSITIES

The Lightbox 50 & 60 comes in two different light intensities:

- 7250 lumen per m² Bright
- 11000 lumen per m² Super Bright



DIMMER Lights can be controlled with an optional remote dimmer to create the best light intensity in every environment.



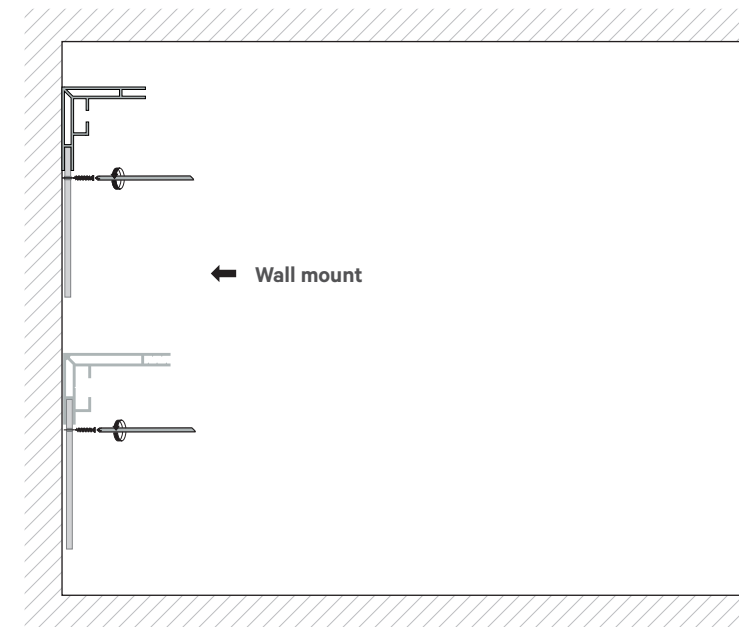
Dibond Connector

DIBOND CONNECTOR The Dibond Connector connects dibond plates together after shipping for final assembly.





APPLICATION The recommended method for displaying the Lightbox 50 & 60 is wall mounting. Mount the lightbox to the wall by drilling into the dibond, with just a few screws.



ACCESSORIES



Backlight



Dimmer



Lockset Heavy Short



Lockset Heavy



Flexible Lockset



Extensionset Heavy



Dibond Connector



LIGHTBOX 90

This single-sided profile is specially designed for illuminating large size textile prints. Even illumination is provided by PowerLEDs mounted to the inside channel of the frame. Thanks to its outer channel, various accessories can be applied.

PROFILE

This lightbox is specially designed for profiles up to 2,5 metres. The PowerLEDs are placed to the inside channel of the frame. The Lightbox 90 is also available with smooth finish, the Lightbox 90 Closed. The Lightbox 90 Closed can be combined with the Lightbox 90 to apply the accessories on its outer channel.

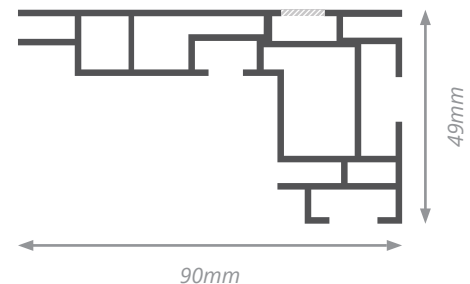
BENEFITS

Fine light distribution

Suitable for sizes up to 2,5 metres

LED-technique: edge-lit by PowerLED

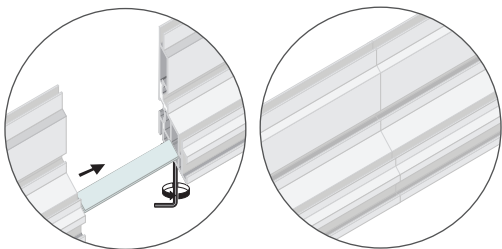
Available in different colours



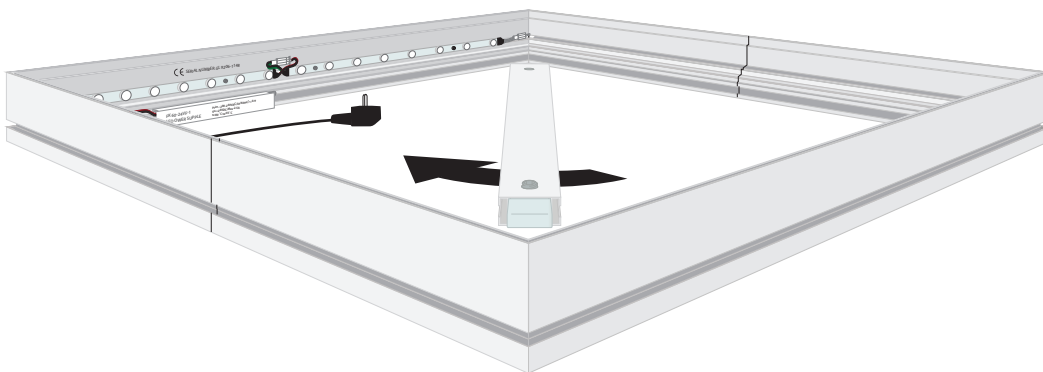
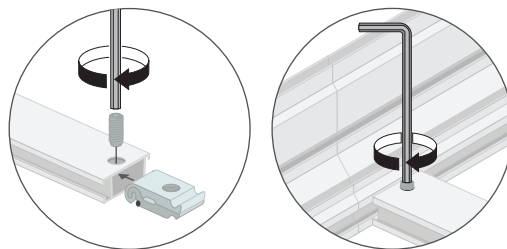


LARGE FRAMES Large size lightboxes can be shipped in smaller sizes. After shipping or after ordering extra lengths, easily assemble the profiles with simple tools to make one frame of the Lightbox 90. To ensure stability of large size frames, stabilisers can be added to the frame.

Extend the frame



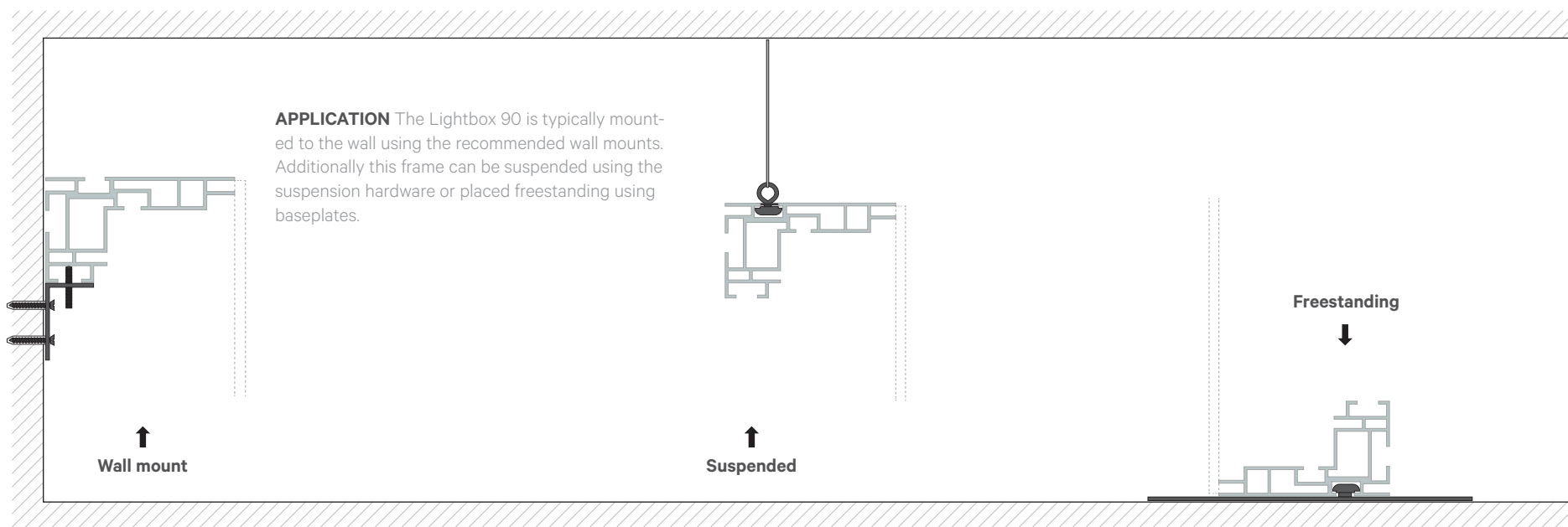
Add stabiliser



EDGE-LIT This lightbox illuminates the textile print from the edge of the profile using LED strips placed to the inside channel of the frame.

Unique feature of the Lightbox 90 is the possibility to mount the LED in multiple positions within the frame. Choose from single-sided or two-sided light mounts. The best fit for your client depends on the size of the frame and the brightness required.





ACCESSORIES



Heavy Powered



60/100W Led Driver



Lockset Heavy Short



Lockset Heavy



Flexible Lockset



Extensionset Heavy



Locks Stabilizer



Stabilizer 43



Wallmount Heavy



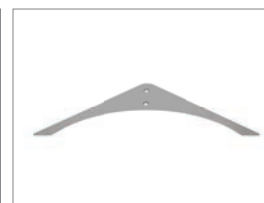
Ceiling Mount



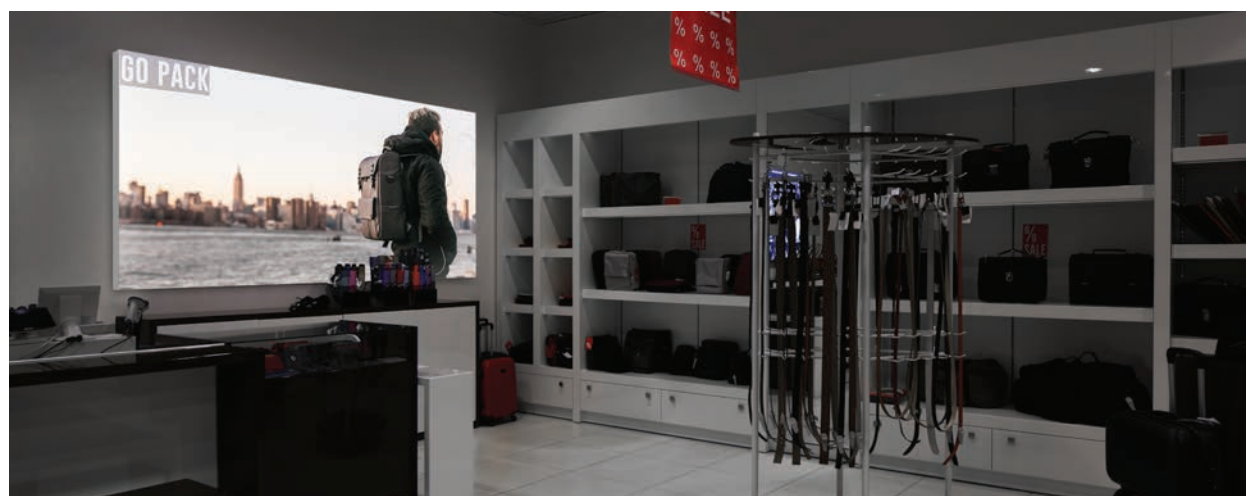
Suspension Cable



Baseplate Side



Baseplate Delta





LIGHTBOX 120

This single-sided profile is specially designed for illuminating large size textile prints. Even illumination is provided by PowerLEDs mounted to the inside channel of the frame. Thanks to its outer channel, various accessories can be applied.



PROFILE

This lightbox is specially designed for profiles up to 3 metres. The PowerLEDs are placed to the inside channel of the frame. The Lightbox 120 is also available with smooth finish, the Lightbox 120 Closed. The Lightbox 120 Closed can be combined with the Lightbox 120 to apply the accessories on its outer channel.

BENEFITS

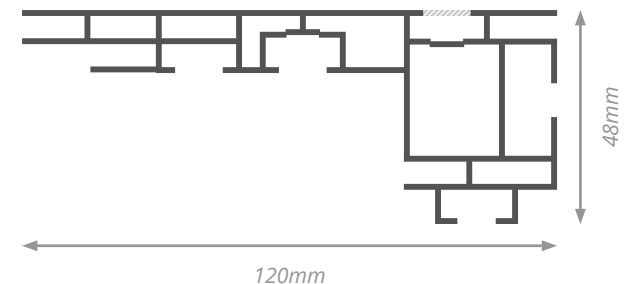
Perfect light distribution

Suitable for sizes up to 3 metres

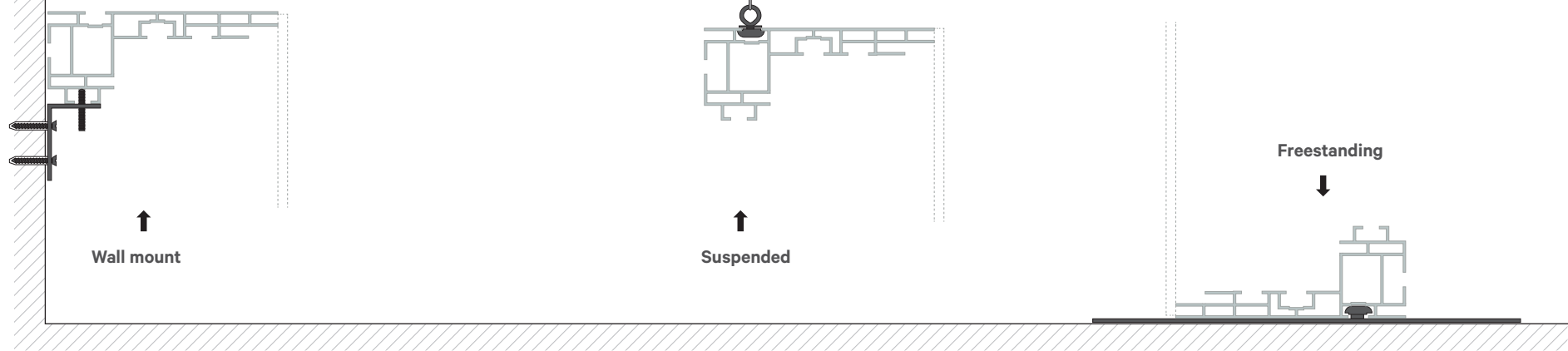
LED technique: edge-lit by PowerLED

Multiple LED possibilities

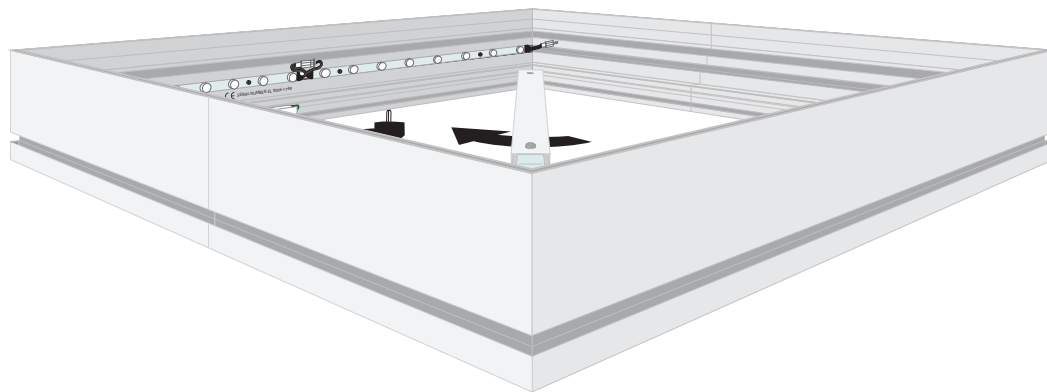
Available in different colours



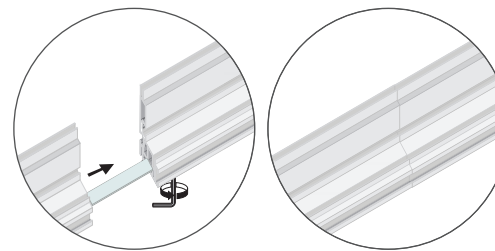
APPLICATION The Lightbox 120 is typically mounted to the wall using the recommended wall mounts. Additionally this frame can be suspended using the suspension hardware or placed freestanding using baseplates.



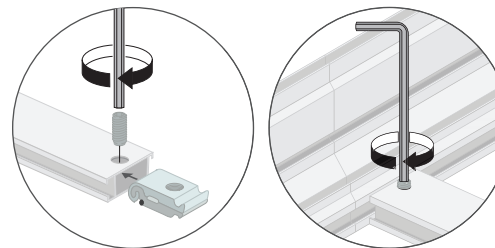
LARGE FRAMES Large size lightboxes can be shipped in smaller parts. After shipping or after ordering extra lengths, easily assemble the profiles with simple tools to make one frame of the Lightbox 90. To ensure stability of large size frames, stabilisers can be added to the frame.



Extend the frame



Add stabiliser



EDGE-LIT This lightbox illuminates the textile print from the edge of the profile using LED strips placed to the inside channel of the frame.

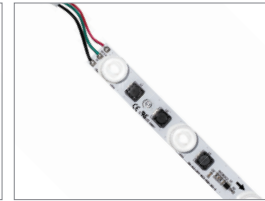
Unique feature of the Lightbox 120 is the possibility to mount the LED in multiple positions within the frame. Choose from single-sided or two-sided light mounts. The best fit for your client depends on the size of the frame and the brightness required.



ACCESSORIES



Backlight



Heavy Powered



60/100W Led Driver



Lockset Heavy Short



Lockset Heavy



Lockset 120



Flexible Lockset



Extensionset Heavy



Locks Stabilizer



Stabilizer 43



Wallmount 120



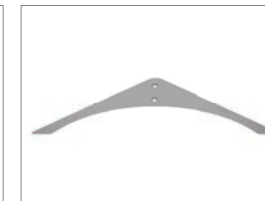
Ceiling Mount



Suspension Cable



Baseplate Side

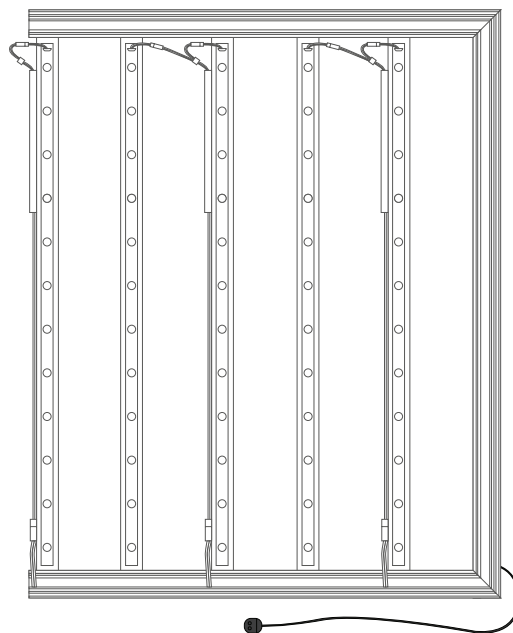


Baseplate Delta

LED ON STABILISER For extreme sizes, LED on stabiliser is recommended to ensure equal light distribution. In this case, the Lightbox 120 has backlight on stabilisers instead of edge-lighting.



MULTIPLE STABILISERS Depending on the size of the frame, stabilisers are equally spaced to ensure an equal light distribution.





LIGHTBOX DOUBLE 100

This double-sided profile with smooth finish is specially designed for illuminating large size textile prints. Even illumination is provided by PowerLEDs mounted to the inside channel of the frame. This solid frame is perfect to use as an impressive banner or partition wall in a showroom or retail window display.

PROFILE

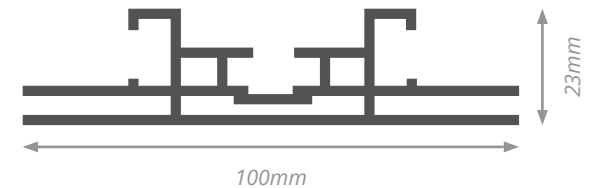
This lightbox is specially designed for profiles up to 2,5 metres. The PowerLEDs are placed to the inside channel of the frame. This double-sided frame is perfect to create an impressive banner or partition wall in showroom or retail window display.

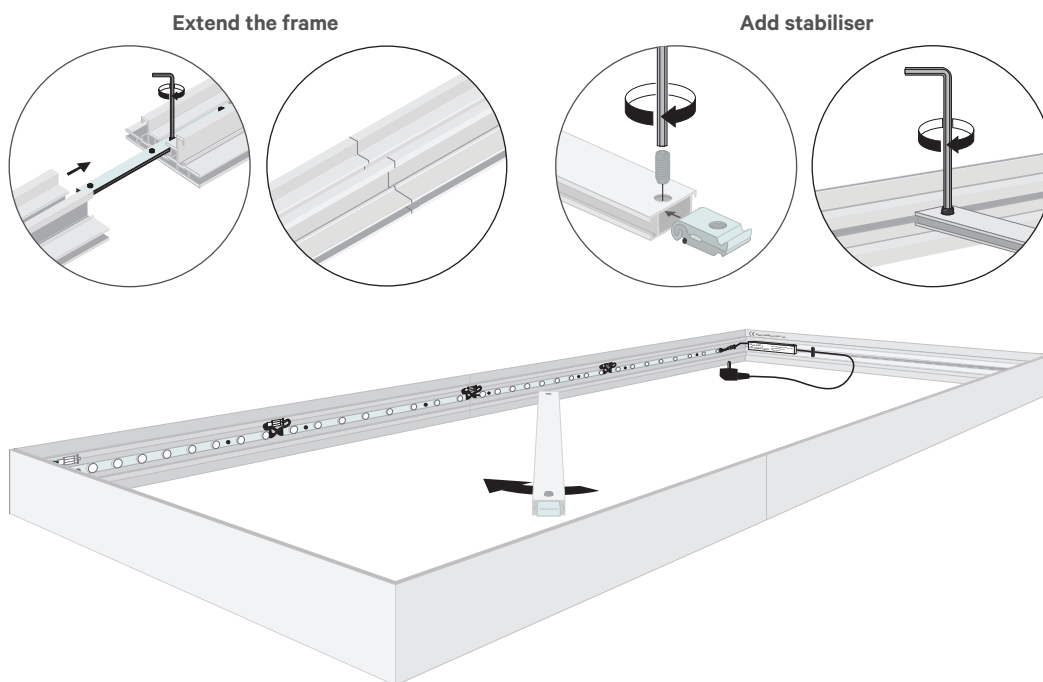
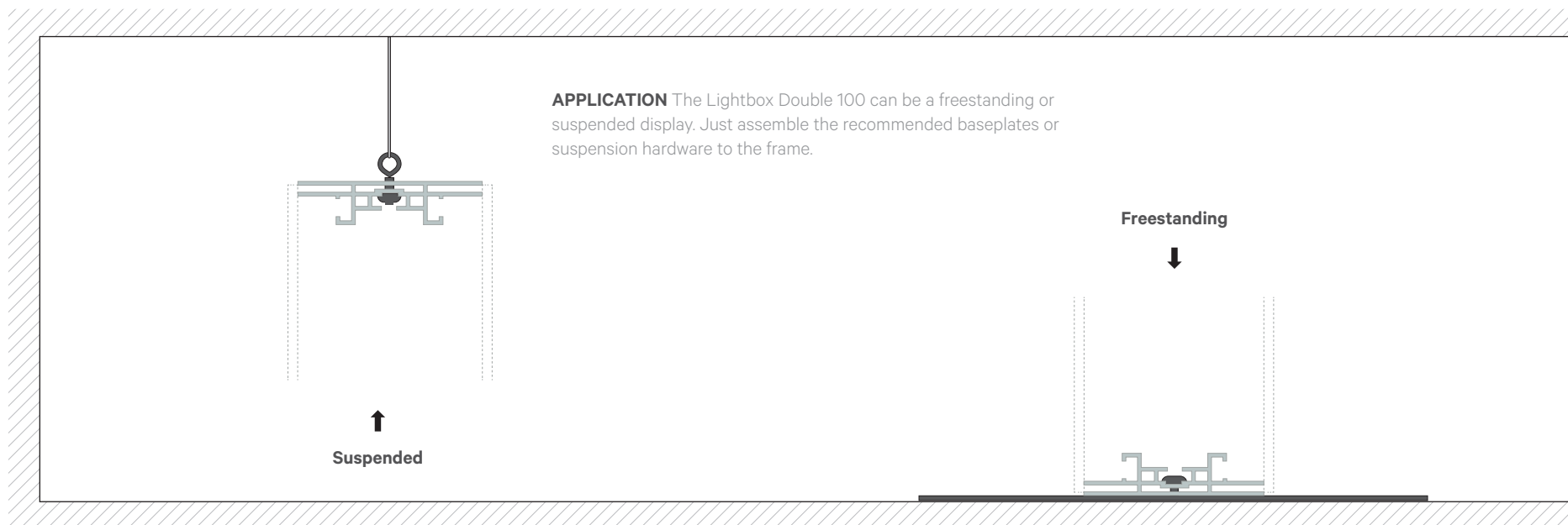
BENEFITS

Perfect light distribution

Suitable for sizes up to 2,5 metres

LED-technique: edge-lit by PowerLED





LARGE FRAMES Large size lightboxes can be shipped in parts. After shipping or after ordering extra lengths, easily assemble the profiles with simple tools to make one frame of the Lightbox 100. To ensure stability of large size frames, stabilisers can be added to the frame.

EDGE-LIT This lightbox illuminates the textile print from the edge of the profile using LED strips placed to the inside channel of the frame.

Unique feature of the Lightbox Double 100 is the possibility to mount the LED in multiple positions within the frame. Choose from single-sided or two-sided light mounts. The best fit for your client depends on the size of the frame, environment and personal preferences.



ACCESSORIES



Heavy Powered



60/100W Led Driver



Lockset 100



Extensionset 100



Locks Stabilizer



Stabilizer 43



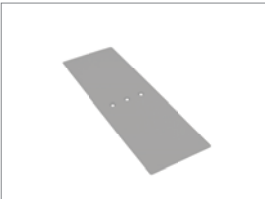
Ceiling Mount



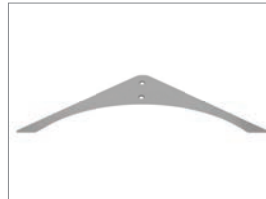
Wallmount Bracket



Baseplate Slim



Baseplate Slim



Baseplate Delta





LIGHTBOX DOUBLE 200

This strong, double-sided profile with smooth finish is designed to create huge, impressive displays that are structurally stable to illuminate large size textile prints. Even illumination is provided by PowerLEDs mounted to the inside channel of the frame. This strong frame is perfect to use in retail window displays, showrooms and hospitality venues. Grab the attention and maximize visual impressions!



PROFILE

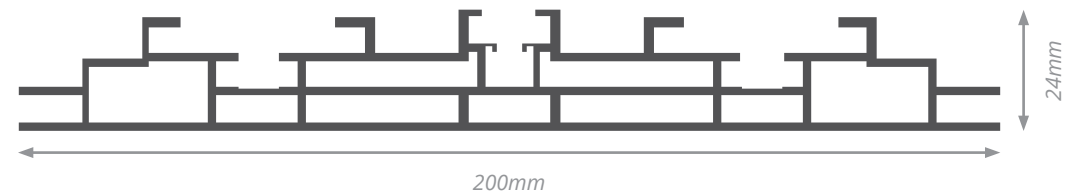
This lightbox is specially designed for profiles up to 3 metres. The PowerLEDs are placed to the inside channel of the frame. This attention grabbing frame is the ultimate lightbox to use as striking sign or as spectacular partition wall in showroom or retail window display.

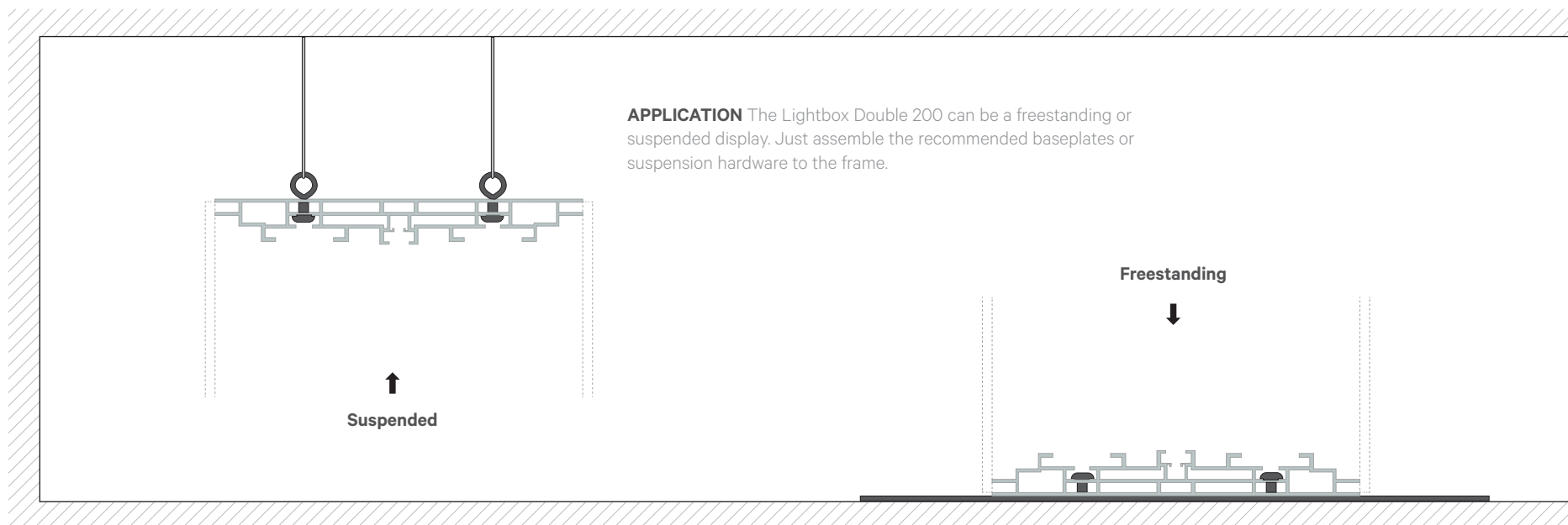
BENEFITS

Perfect light distribution

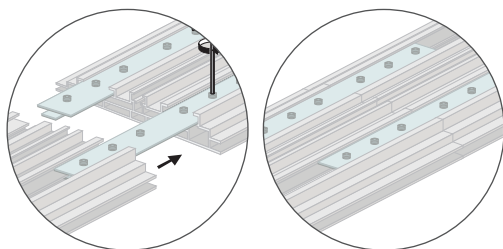
Suitable for sizes up to 3 metres

LED-technique: edge-lit by PowerLED

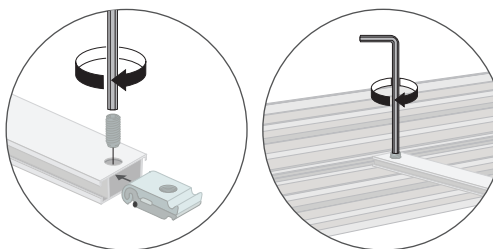




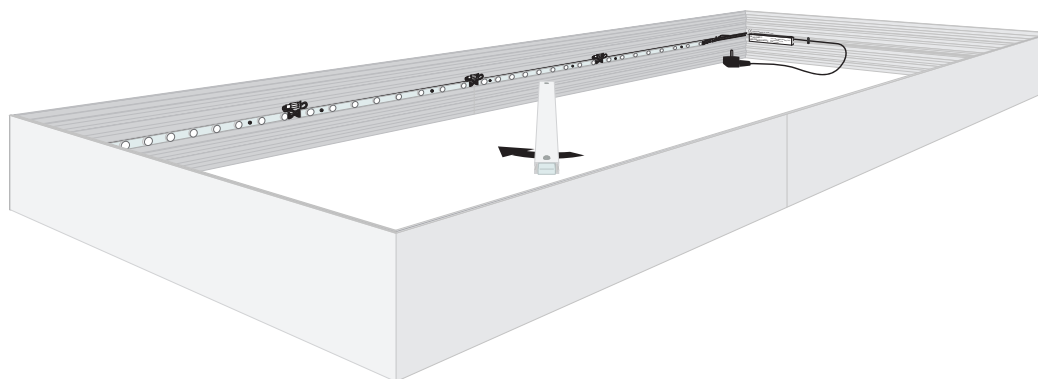
Extend the frame



Add stabiliser



LARGE FRAMES Large size lightboxes can be shipped in smaller parts. After shipping or after ordering extra lengths, easily assemble the profiles with simple tools to make one frame of the Lightbox 200. To ensure stability of large size frames, stabilisers can be added to the frame.



EDGE-LIT This lightbox illuminates the textile print from the edge of the profile using LED strips placed to the inside channel of the frame.

Unique feature of the Lightbox Double 200 is the possibility to mount the LED in multiple positions within the frame. Choose from single-sided or two-sided light mounts. The best fit for your client depends on the size of the frame, environment and personal preferences.



ACCESSORIES



Heavy Powered



60/100W Led Driver



Lockset 200



Extensionset 200



Locks Stabilizer



Stabilizer 43



Ceiling Mount



Baseplate D200



CURVED FRAMES

Create impressive signs with curved frames. Standard textile frames are changed into exceptional frames to make a statement. Use the curved frames as a unique hanging banner or a spectacular curved back wall in retail store display and exhibitions.

PROFILE

Single- and double-sided profiles are bent in every desired curve. During the bending process laser measurements are performed to accurately achieve the correct bend in the aluminium, accurate to the millimetres.

BENEFITS

2D & 3D shapes

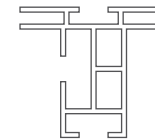
Single- and double-sided

> 500 mm radius

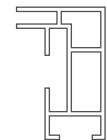
Easy installation or ready-made

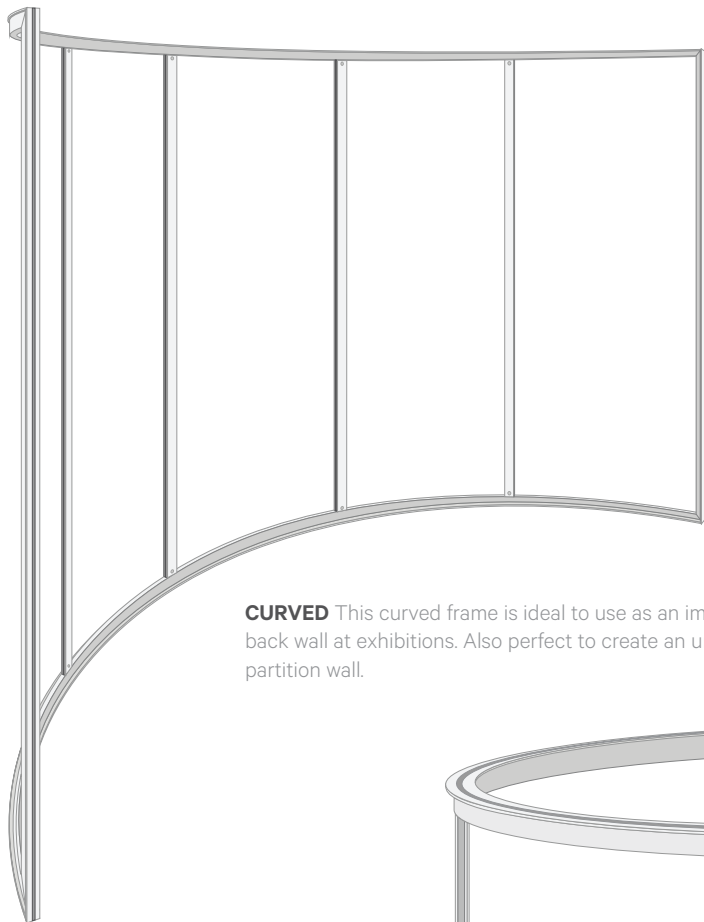


Double 44



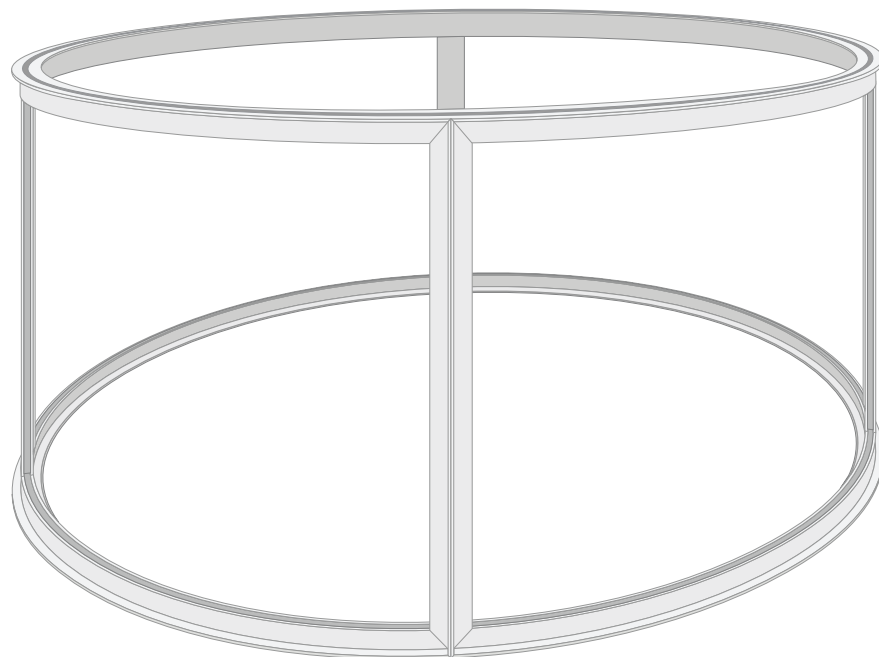
Heavy 27





CURVED This curved frame is ideal to use as an impressive back wall at exhibitions. Also perfect to create an unique partition wall.

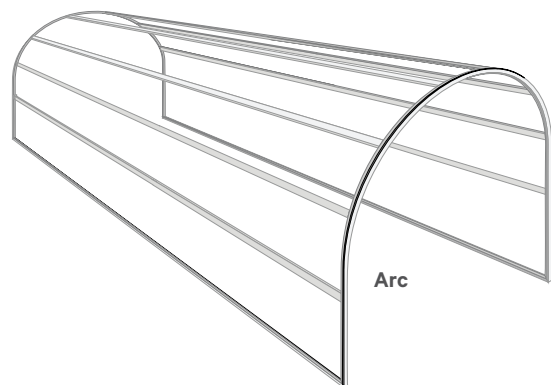
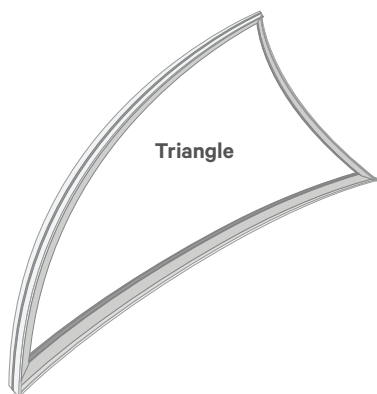
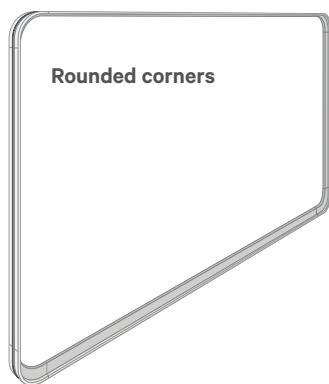
CIRCLE Really stand out with this circular frame. A unique item in retail, or use it to decorate an office or showroom.



CYLINDER Draw attention from great distance with these striking Cylinder frames. Most often used in exhibitions, showrooms or as display in retail interiors.

OTHER POSSIBILITIES Curved frames are always customized. If you like other shapes, please contact us to discuss all our options.

EXAMPLES





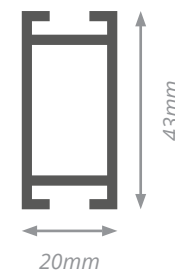
STABILISERS

Stabilisers are applied in use of large format textile frames. These large frames are often used as a back wall at exhibitions, or integrated completely into exhibition stands. Also used in retail, large size frames create attention grabbing signs.

Stabilization guide

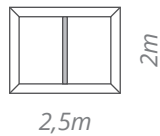
Depending on the frame size, stabilisers can be assembled into the aluminium frame to ensure stability of the frame.

Frame length	Stabilisers
< 2 metres	0
2 - 2,5 metres	1 recommended
2,5 - 4 metres	1 required
4 - 5 metres	2 recommended
5 - 6,5 metres	2 required
6,5 - 7,5 metres	3 recommended
7,5 - 9 metres	3 required
9 - 10 metres	4 recommended
10,5 - 12 metres	4 required
12 - 13 metres	5 recommended
13 - 14,5 metres	5 required
14,5 - 15,5 metres	6 recommended
15,5 - 17 metres	6 required



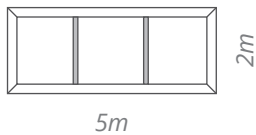
STABILISER POSITIONS

The multiple stabiliser options are depending on the exact size of the frame, as mentioned in the stabiliser guide per profile. Important is the difference between stabilisers that are recommended or required.



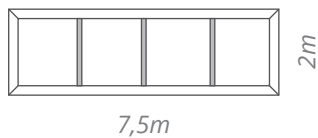
1. Long side stabiliser

Use one stabiliser when the long side of the frame has a length of 2,5 – 4 metres. One stabiliser is recommended from sizes between 2 - 2,5 metres.



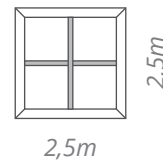
2. Long side stabilisers

When the long side of the frame has a length of 4 - 5 metres, two stabilisers are recommended. Two stabilisers are required for sizes up to 6,5 metres.



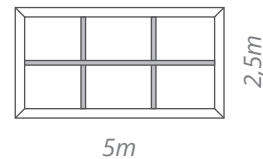
3. Long side stabilisers

When the long side of the frame has a length of 6,5 - 7,5 metres, three stabilisers are recommended. Three stabilisers are required for sizes up to 9 metres.



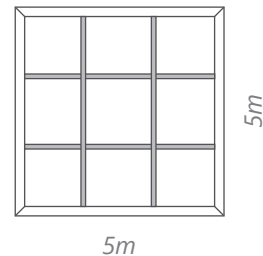
4. Two side stabiliser

For frame sizes of a length and width of 2 - 2,5 metres, two stabilisers are recommended. Two stabilisers are required for length and width up to 4 metres.



5. Two stabilisers on both sides

When one side of the frame is above 2 metres and the other side above 4 metres, three stabilisers are recommended.



6. Two stabilisers on both sides

When both sides of the frame have a length above 4 metres, two stabilisers are recommended. Each on every side.

LED TECHNIQUES

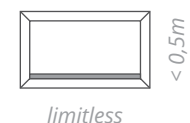
Lightboxes makes your advertising stand out! Make eye-catching creations with three types of lightboxes, based on three different LED-techniques: LED on dibond, PowerLED and LED on stabiliser.

LED positions

The edge-lit profiles that are illuminated with PowerLEDs, have the ability to mount the LED in multiple positions within a frame. Choose from single-sided or two-sided light mounts, mounted within the long side of the frame or the short side. Which option is the best fit for the lightbox of your client, depends on the size.

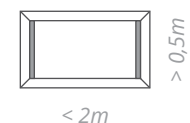
1. Long side LED

When the lightbox has one side of max 0,5 metres. The longer side is unlimited in size.



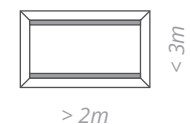
2. Short sides LED

When the lightbox has one side above 0,5 metres (until max. 1,2 metres) and the longer side has a maximum length of 2 metres.



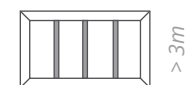
3. Long sides LED

When one side of the lightbox is above 2 metres and the other one is beneath 3 metres.



4. LED on stabiliser

If the frame is bigger, turn the page for more options.

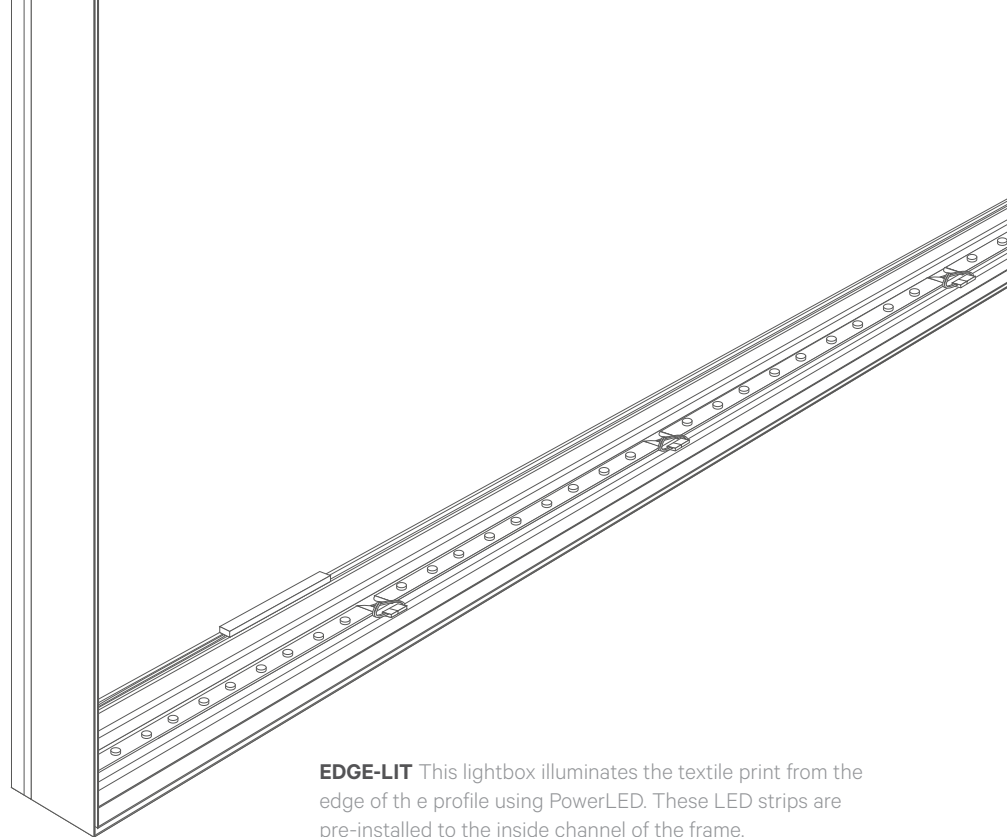


5. LED on dibond

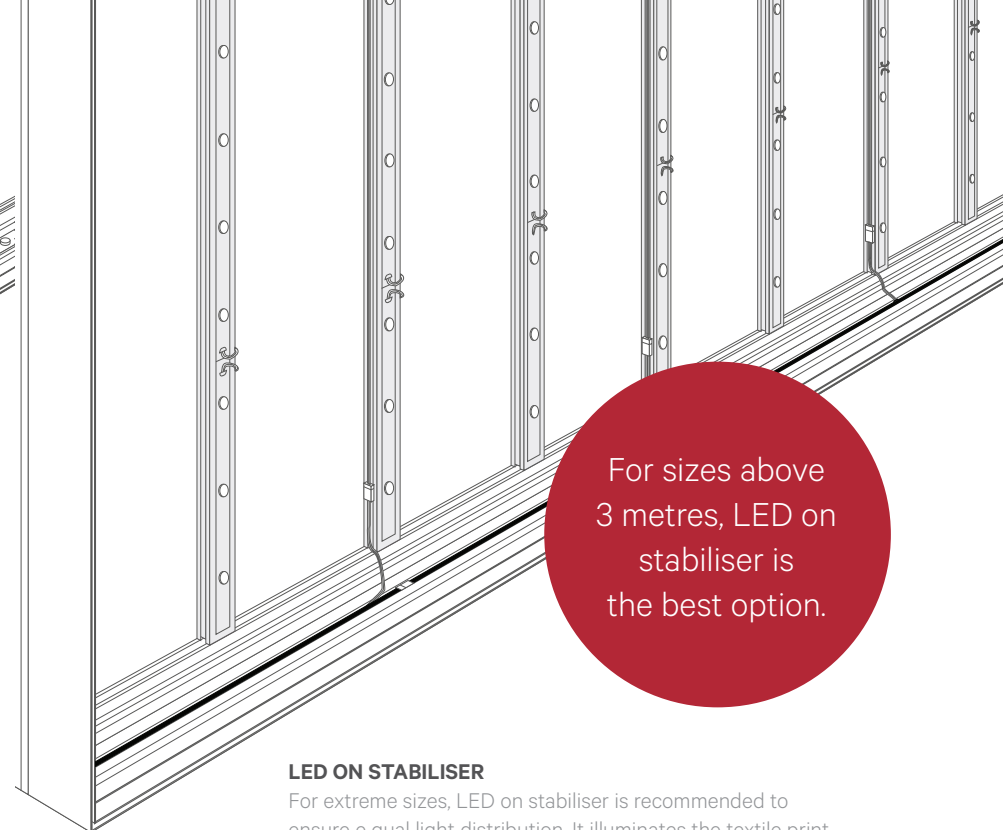


Dimmer

Lights can be controlled with an optional remote dimmer to create the best light intensity in every environment.



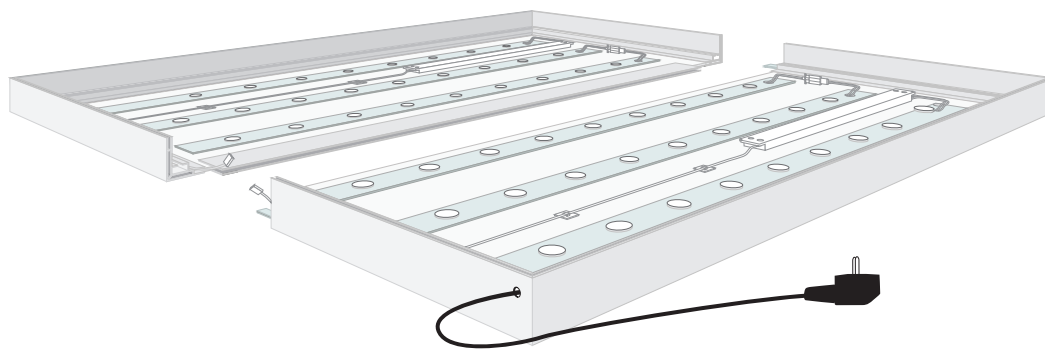
EDGE-LIT This lightbox illuminates the textile print from the edge of the profile using PowerLED. These LED strips are pre-installed to the inside channel of the frame.



LED ON STABILISER

For extreme sizes, LED on stabiliser is recommended to ensure equal light distribution. It illuminates the textile print from behind using LED strips mounted on stabilisers.

For sizes above 3 metres, LED on stabiliser is the best option.



LED ON DIBOND These lightboxes illuminate the textile print from behind using LED strips on a dibond back. The lighting design is balanced to create an even illumination across the entire surface.

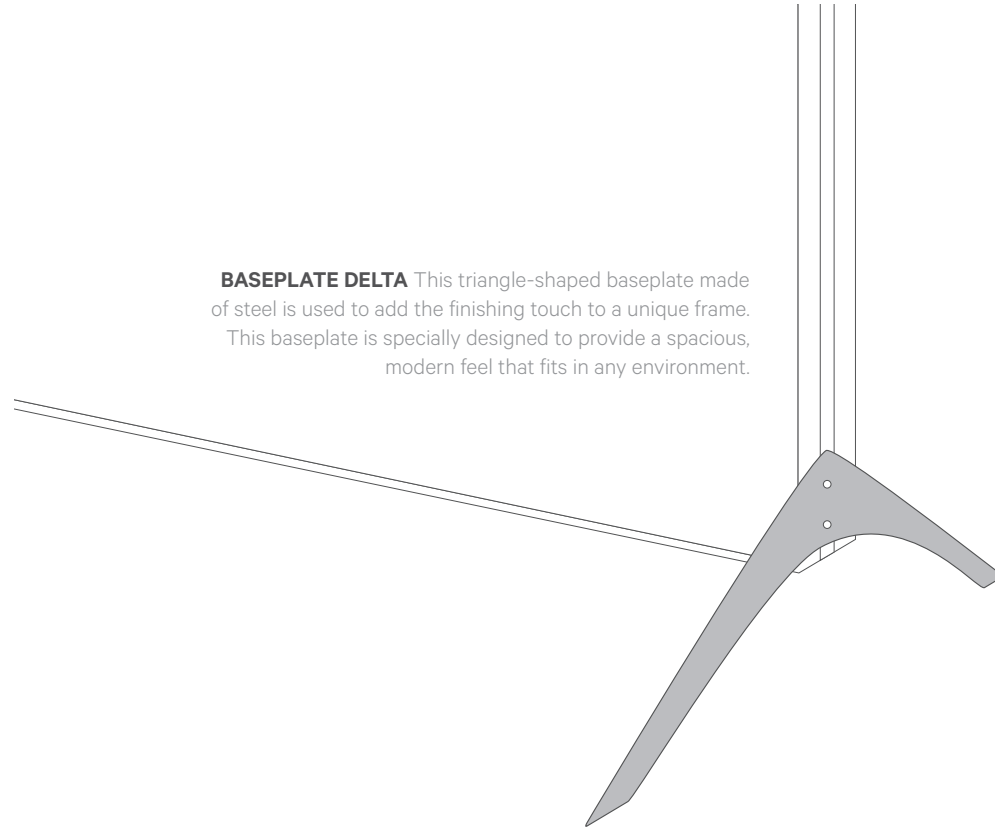
FREESTANDING & SUSPENDED

Make sure that each freestanding textile frame and lightbox is stable using baseplates. Find the best suited baseplate for each frame in our wide range of baseplates. You can also suspend the frame from ceiling with the suspension hardware that secures any frame in any size.

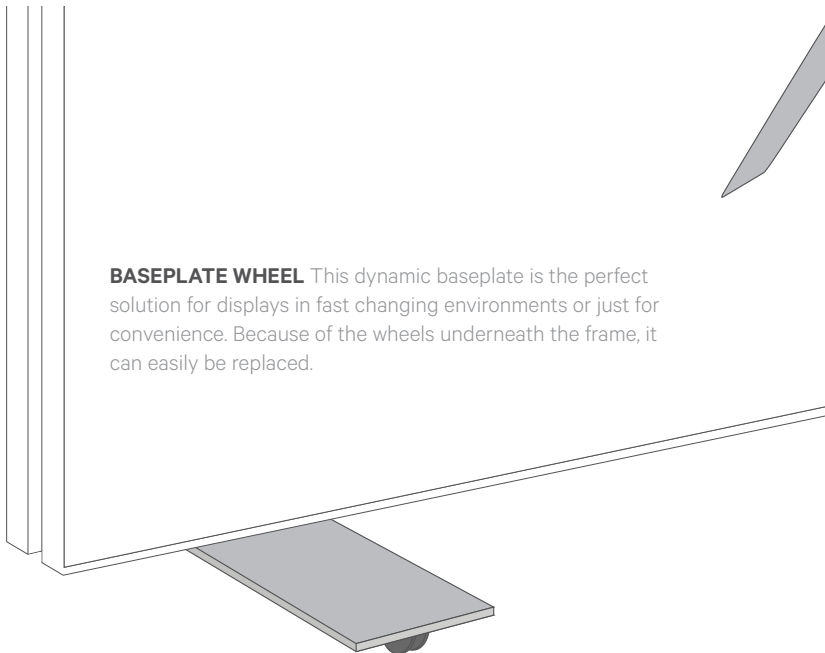
BASEPLATE REGULAR The regular baseplates are plain rectangular baseplates, made of steel or aluminium. These most chosen baseplates are specially designed to draw all attention to the frame and its print.

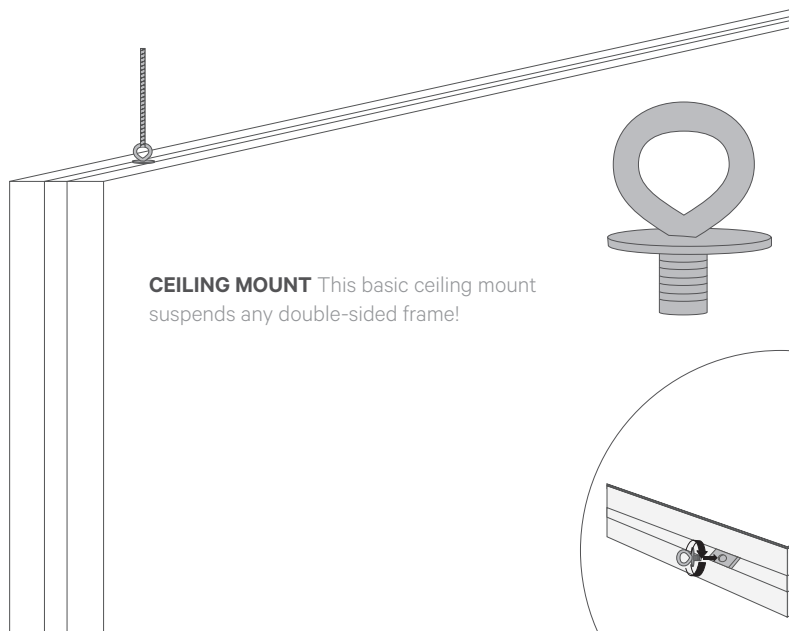
BASEPLATE SIDE These baseplates has rectangular shapes and are made of steel. These baseplates are specially designed to draw attention to the frame and its print, while giving the frame a modern touch.

BASEPLATE DELTA This triangle-shaped baseplate made of steel is used to add the finishing touch to a unique frame. This baseplate is specially designed to provide a spacious, modern feel that fits in any environment.

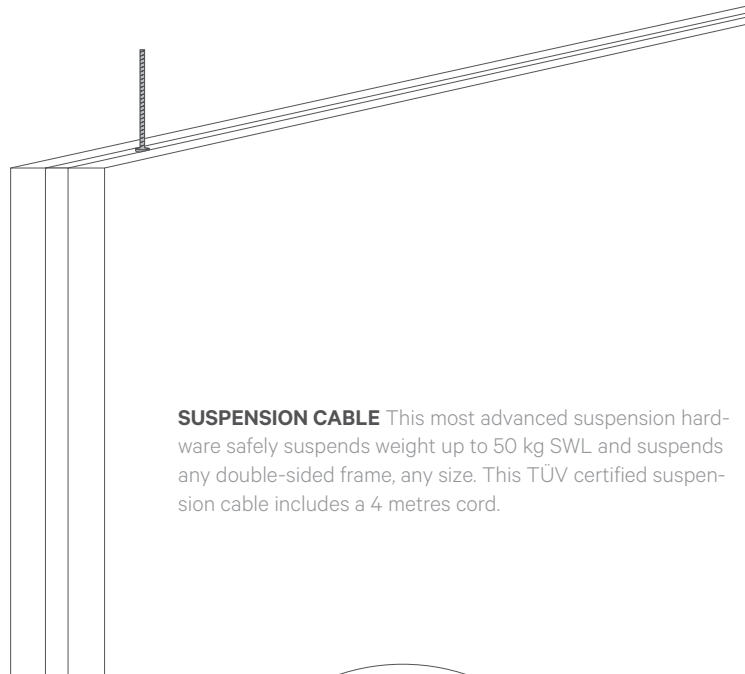
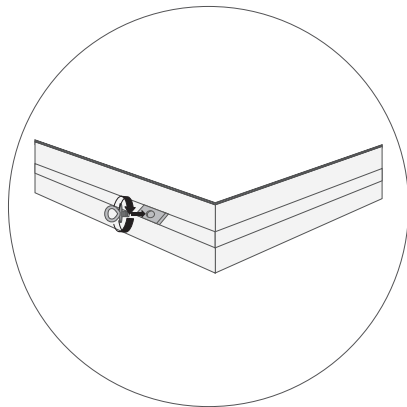


BASEPLATE WHEEL This dynamic baseplate is the perfect solution for displays in fast changing environments or just for convenience. Because of the wheels underneath the frame, it can easily be replaced.

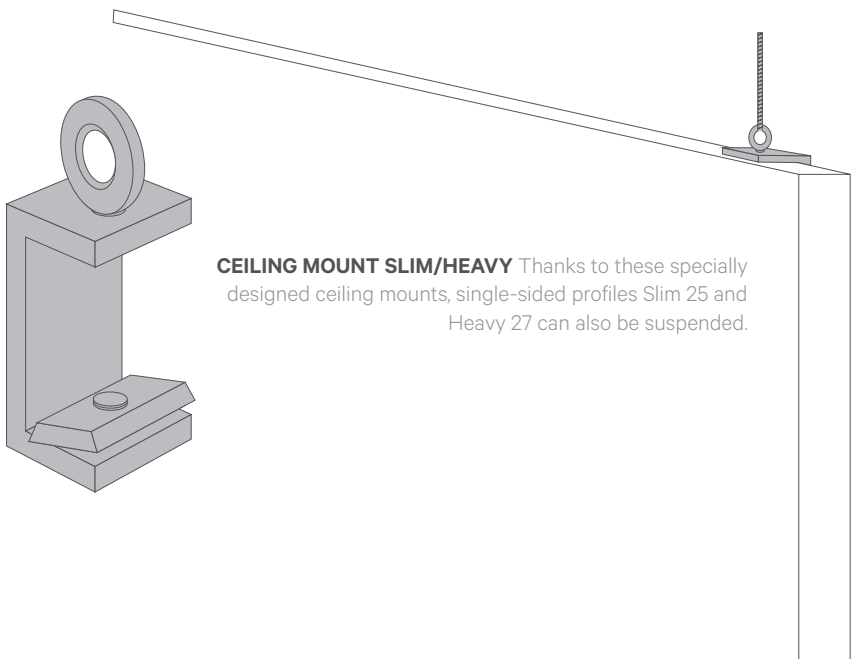
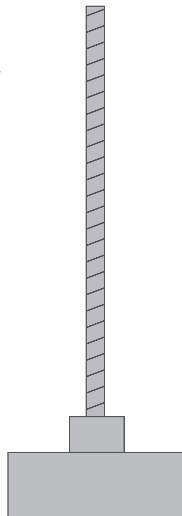
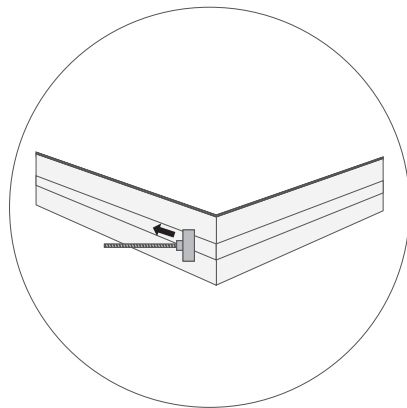




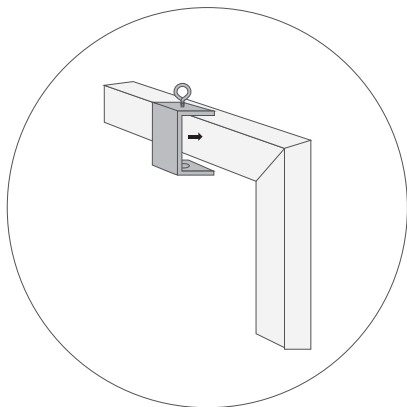
CEILING MOUNT This basic ceiling mount suspends any double-sided frame!



SUSPENSION CABLE This most advanced suspension hardware safely suspends weight up to 50 kg SWL and suspends any double-sided frame, any size. This TÜV certified suspension cable includes a 4 metres cord.



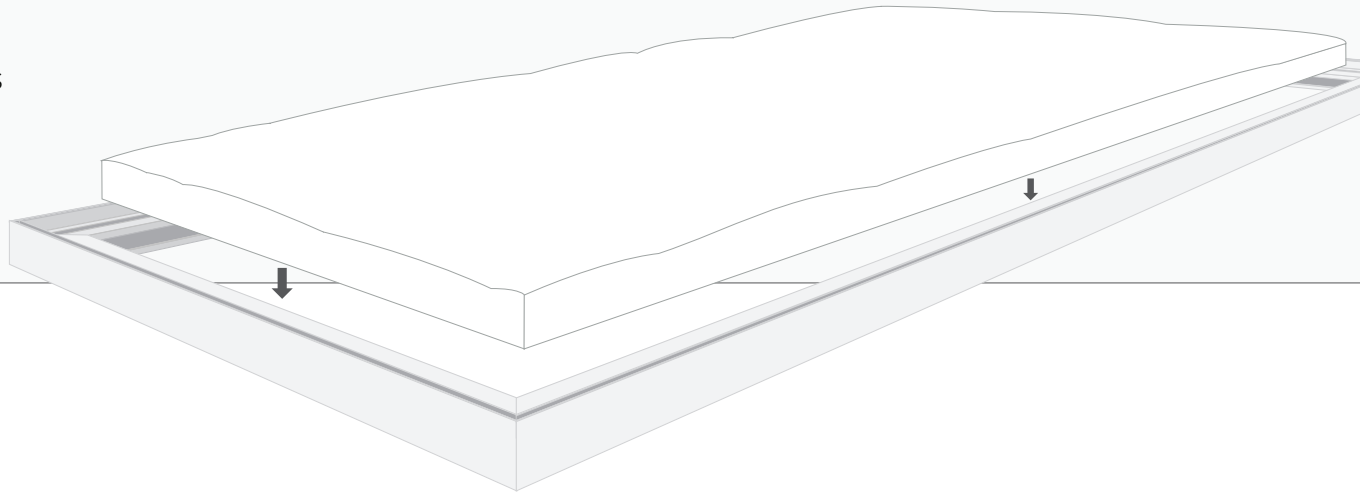
CEILING MOUNT SLIM/HEAVY Thanks to these specially designed ceiling mounts, single-sided profiles Slim 25 and Heavy 27 can also be suspended.



ACOUSTIC SOLUTIONS

Improve sound acoustics by reducing ambient noise in any environment. Mount the frame to the wall, suspend it from the ceiling or use it as a partition wall between office spaces, meeting rooms or showrooms. Perfect for any space that would benefit from ambient noise reduction, from offices and meeting rooms to restaurants.

APPLICATION The material is simply placed in the frame behind the textile print. Optionally fix Therm Acoustic to the frame with Kit Extreme Tack. Then place the frame free-standing, mount the frame to the wall or suspend it from ceiling and place the textile print into the frame.



VISUALS

For the Tension frames we have a number of standard textiles available with two different types of printing techniques. Other textiles can be delivered on request but will be quantity dependent.

For the frames without lighting we advise:

Jetbanner 220 grams polyester

This is a brilliant fabric that has excellent print results and at the same time is priced very competitively.

Advised for:

- Simple 19
- Heavy 27
- Cabinet 30

Maximum available size is 300 cm

Semi Blockout 280 grams

This material has a black back side that completely blocks any light. On request also available with white back side.

Advised for:

- Heavy 27
- Double 44

Maximum available size is 300cm

Mediatex 270 grams polyester

This is a dense fabric with a high-quality appearance.

Advised for:

- Double 44

Maximum available size is 300cm

Jetbanner and Mediatex are printed with water-based inks and are odorless.
Semi Blockout is available with both sublimation and UV print.



For the Lightbox frames we advise:

Mediatex 270 grams polyester

This material is very suitable for full color prints, but less for prints with large solid colored surfaces.

Advised for:

- All Lightbox frames

Maximum available size is 300cm

Backlittex Premium 130 grams

Contrary to Mediatex, this material is suitable for prints with large solid colored surfaces and can still be printed with sublimation inks, thus being odorless.

Advised for:

- All Lightbox frames

Maximum available size is 300cm

Mediatex and Backlittex Premium are only available with water-based sublimation printing.

For frames with the shortest side bigger than 300cm and for visuals that need intense color effects, we have two UV printed fabrics available:

Samba 195 grams

This material has the typical semi brilliant look and feel of fabric to it.

Advised for:

- All Lightbox frames

Maximum available size is 500cm

Pearl 130 grams

This is a shiny material that especially with a double strike print will give an unsurpassed visual experience.

Advised for:

- All Lightbox frames

Maximum available size is 500cm

To get an optimal light effect of the Lightbox a block out material in white can be ordered. This fabric will deflect the light inside the Lightbox in a subtle way and will further enhance the visual experience.

For this solution we advise Theatre Block out 500 grams polyester. This material is available in a maximum size of 500cm.

All prints are finished to an exact size with silicon tape to be pushed into the profiles and with a tab in one corner for quick release of the fabric.

If desired can a text be printed on the tabs, but this is only available for larger volumes.

Although larger sizes can be folded, we advise to ship all visuals for Lightboxes to be shipped on rolls. This to avoid any possible damage to the print.

Installation of the visual

The proper installation of the print into the frame can be challenging if not done in the correct way. Here are some tips for an easy and fast install with the best end result:

- If possible, lay the frame flat with the print on top.
- First insert all four corners of the print into the frame.
- Slide in the sides.
- Wear thin, clean but strong gloves to protect your hands from possible sharp edges and to have a better grip on the material when stretching.



POP-UP LED-BOX

Easy. Fast. Portable.
No tools needed.

BENEFITS

Size: 100 x 200 cm

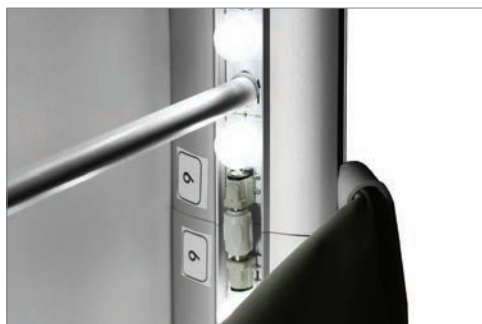
Available in silver, black and white

Portable

No tools needed

Weight included cartonbox: 9,5 kilo





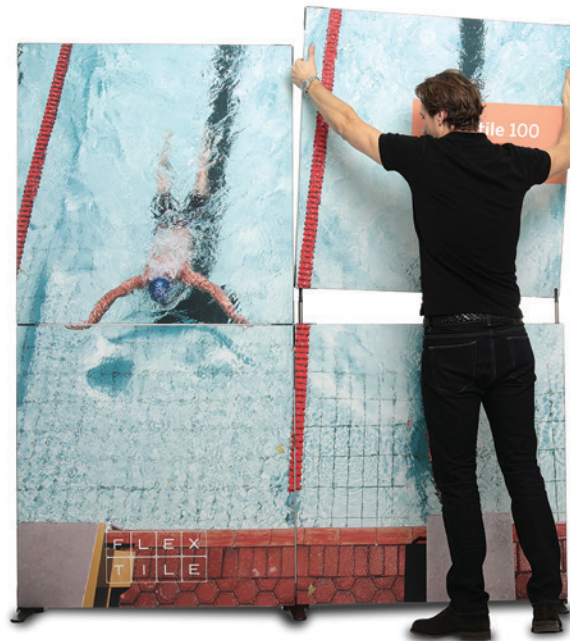


FLEX TILE 80, 100, 120

A whole new generation of foldable tongs.

Extremely easy to fold up portable aluminum frames for playful squares - with the picture ready-mounted on the stand or with full-length images as an alternative.

With three different frame sizes, you can create endless number of configurations! The frames are folded out by hand and the feet on the floor hold the frames in place. Build on the height and width, in straight lines or at angles by stacking and linking frames together. Choose from ready-made solutions or build the modules exactly as you want them.



The frames are folded out by hand and the feet on the floor hold the frames in place.



BENEFITS

Three different sizes

Infinite number of configurations

Flexible fabric images

Portable construction with aluminum frames



SIZES The frames are square and are available in sizes 80 cm, 100 cm and 120 cm.



ALSO THE FABRIC IMAGES ARE FLEXIBLE

Choose between having a picture per frame or a comprehensive picture over several frames (works on both front and back). It is also possible to choose a double-sided printed cover in stretch fabric for exposure in two directions.

ONE PICTURE PER FRAME Simple and convenient. The pictures will always be pre-assembled in the frames. Easy to set up and take down. The pictures are always on the frames using invisible border strips.



A WHOLE PICTURE A larger image that goes over several frames. This principle works both for the front and back. The picture is easily attached in the frame with the help of a sewn-on edge strip.



DOUBLE-SIDED COVER Printed stretch fabric that is easily pulled over the stand. No joints and you will automatically print on both sides with messages in two directions.

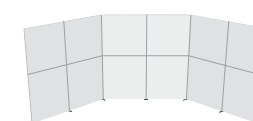
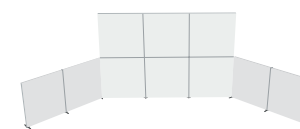
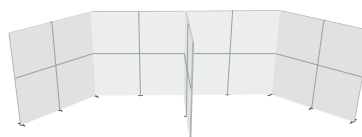
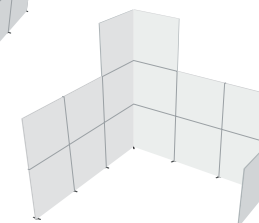
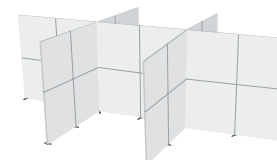
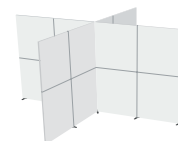
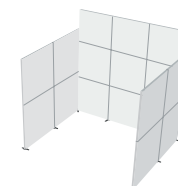
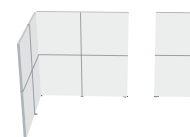
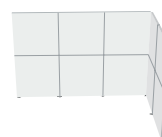




TOTAL SIZE The total size of a Flexile wall depends on the frame size you use (80, 100 and 120 cm) and the number of frames you choose to build your wall with.

We have presented different wall packages that may be suitable to start with, but it is just as good to let your imagination flow and build endless variants. Remember to build configurations with the same frame size as stacking of different or mixed sizes is not possible.

INFINITE CONFIGURATIONS With three different frame sizes, you can create an endless number of configurations!





FABEREXPOSIZE

VISUAL EXPERIENCE

www.faberflags.se
info@faberflags.se

+46 8 120 889 00

Radiovägen 3A, 181 55 Lidingö